



Drop-arm awnings, Markisolettes & Dutch canopies

Keep the sun out, while retaining a clear view



Drop-arm awnings, Markisolettes & Dutch canopies

Keep the sun out, while retaining a clear view

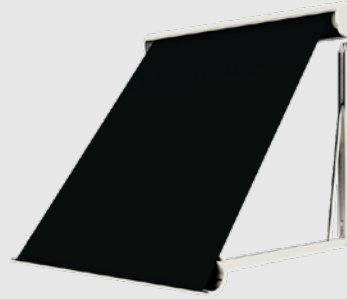
Drop-arm awnings; one of the first sun blinds to be introduced to the market. Markisolettes; a modern interpretation of the concept. Together, the two are responsible for the continuing popularity of façade sun blinds. They are highly effective in keeping the (low) sun out, without impeding one's clear view of the outside.

A drop-arm awning extends diagonally from the façade, thus successfully keeping the sun out. Markisolettes first open vertically, before further extending diagonally. This enables you to create more shade. Both products are highly suitable for project applications, thanks to their effectiveness and suitability for installation at height. Such projects include school buildings, office blocks and hospitals. Are drop-arm awnings and Markisolettes only suitable for use as project sun blinds? Of course not; you can also enjoy all the benefits that these champions of shade offer in your own home. We would be pleased to give you a guided tour of our range.

Drop-arm awning Vista Comfort	4
Drop-arm awning Vista Elégance®	6
Drop-arm awning Vista Favorite®	8
Markisolette Compact	10
Markisolette Extra	12
Markisolette Excellent	14
Dutch canopies	16
Tibelly® acrylic fabric	18
Certifications	20
Mood impression	22

Drop-arm awnings

This traditional sun blind remains relevant, thanks to its highly practical design. It was conceived as a means effective means of keeping the sun out, without impeding one's view of the outside, or the inside for that matter. A drop-arm awning extends directly diagonally from the façade. The fabric is attached in the front frame, and opens out together with the arms. These can be extended to a maximum of 90°, and any other angle in between. The arms of the drop-arm awning have a distinctive role. There are various types of standard and special arms, each of which offers its own particular benefits. You have a choice of windproof, storm-proof, gas-spring, slide-drop and balcony arms. Ask your dealer which is most in keeping with your particular shade requirements.



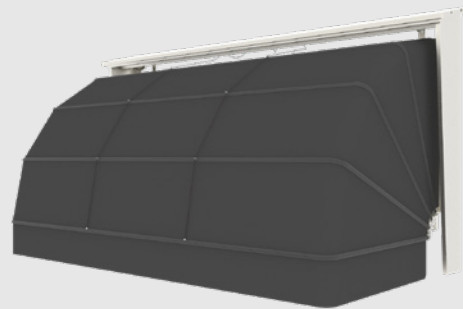
Markisolettes

Markisolettes can perhaps best be described as modern interpretation of the traditional drop-arm awning. As a result of the steadily increasing popularity of vertical sun blinds, which is also capable of blocking out the low sun, we feel justified in saying that Markisolettes offer the best of both worlds. This modern blind initially opens vertically, before further extending diagonally. This renders it suitable for tall windows, while it also offers the opportunity to block out the low sun, without impeding one's view. The fabric is attached in the front frame, and opens out together with the arms. These can be extended to a maximum of 90°, and any other angle in between.



Dutch canopies

Dutch canopies, perhaps our most special awnings to date. A nostalgic appearance, but certainly not yet dated. The special thing about these canopies is that, even today, it is still manufactured in the same way as back in the days. So you could call it an artisanal product, one that can compete with today's awning requirements. A unique feature of the Dutch canopy is that it also blocks light from the side, because the corners are closed with fabric. A Dutch canopy projects in an arc up to a maximum angle of 90° and everything in between. This forms a dome around your window frame and window.



Tibelly® in support for the Dutch Cancer Society (DCS)

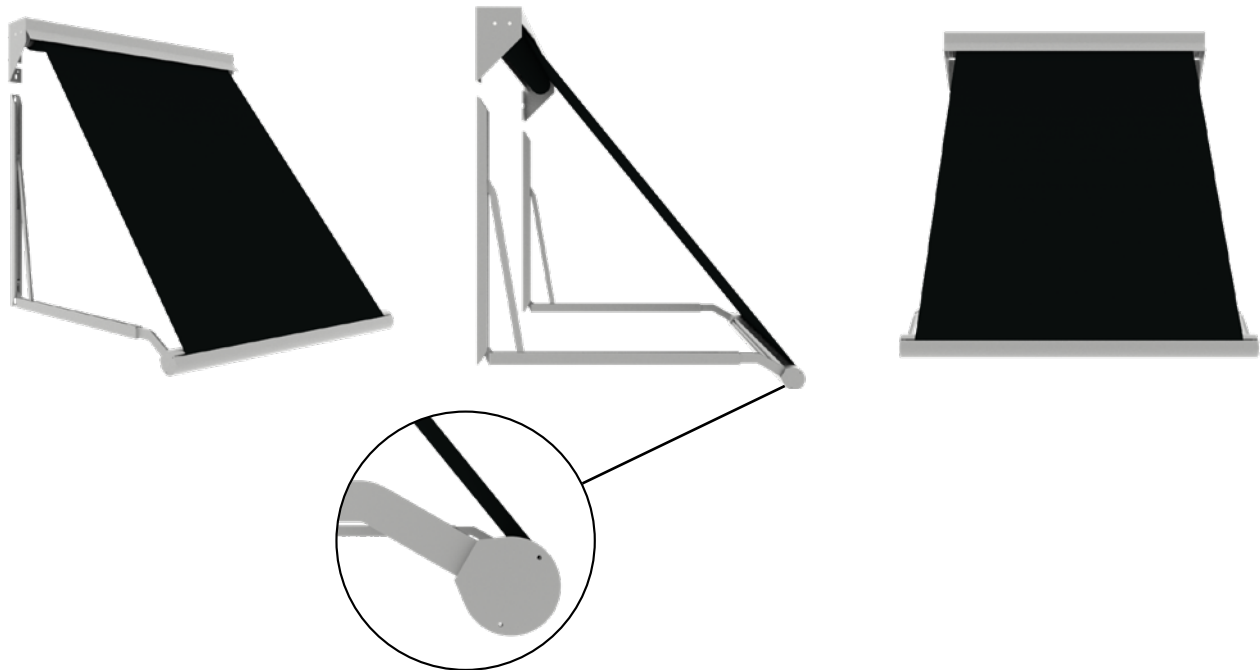


For each meter of acrylic fabric sold, € 0,05 is donated to the Dutch Cancer Society (DCS). This supports scientific research against skin cancer. For more information, please visit the website www.kwf.nl/english. If you are curious about how much this campaign has already achieved, please check www.tibelly.nl.



Vista Comfort

Drop-arm awning



The Vista Comfort is the entry model of awnings with drop-arms. Thanks to its extremely attractive price, keeping out sunlight no longer has to be expensive. The characteristic aspect of the Vista Comfort - and as such all awnings with drop-arms - is that your views are not obstructed. The variable extension angle makes it possible to use the awning in virtually any situation and the design is intentionally sober so that it forms a unit with the façade of a house or any other building.

The Vista Comfort is also available with valance. Furthermore, this awning with drop-arms can be operated both manually and electrically. The Vista Comfort normally comes in silver anodised.



Characteristics

- ☐ Retaining a clear view
- ☐ Favourable price/quality ratio
- ☐ Variable projection
- ☐ Available with or without valance
- ☐ Available with manual or electrical control system

Colours*



Maximum dimensions*

	Width	Projection
Vista Comfort 65/110	6000 mm	1500 mm

Certifications

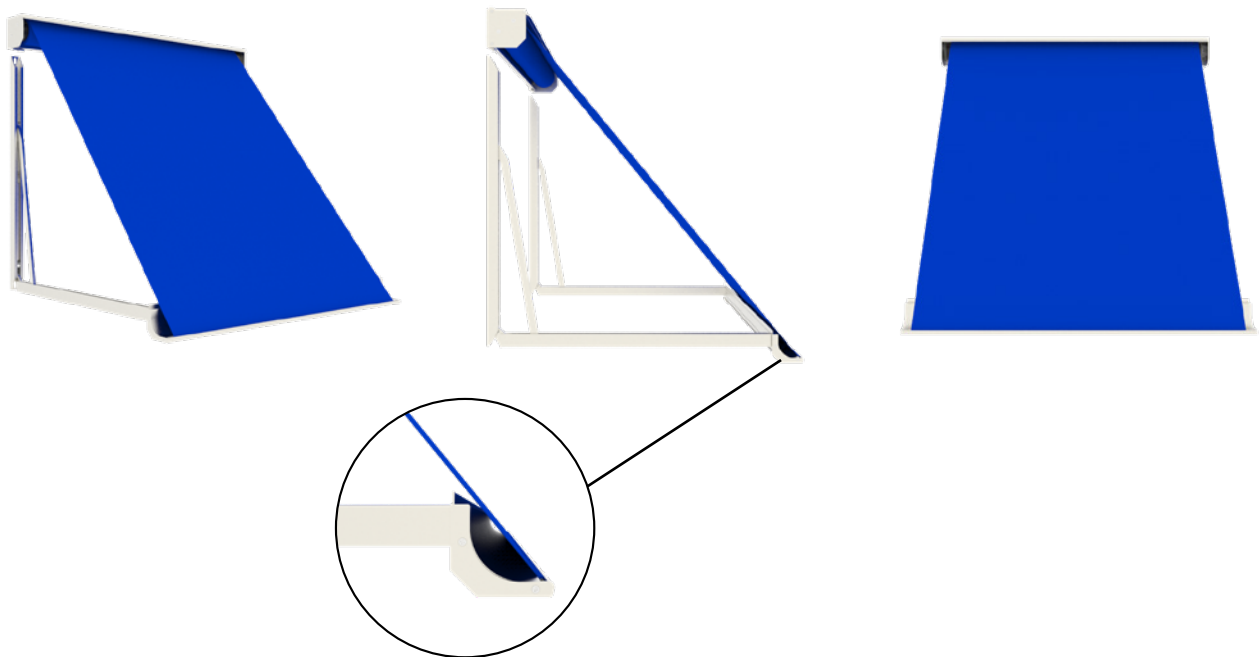


**When using special arms, the number of dimensions is limited (ask your dealer about the possibilities).*



Vista Elégance®

Drop-arm awning



The Vista Elégance is an elegant sun blind that is available in two designs. Both have a unique characteristic and appearance but technically, they are identical. The Vista Elégance 95 is characterised by the semi-cassette with a square design. The Vista Elégance 110 is a cassette with a slanted design (as shown above).

The outward characteristic is obvious, the difference in cassette concerns the fabric protection when closed. A semi-cassette offers good protection, a cassette offers full protection. Thanks to its variable extension angle, the awning can be installed nearly everywhere. Combined with electric operation, this is a highly effective sun blind, both for residential and commercial buildings. The awning can also be operated manually. Available in three standard colors, however, every RAL colour is available on request.



Characteristics

- ☐ Retaining a clear view
- ☐ Choice out of 2 models: 95 and 110
- ☐ Variable projection
- ☐ Available with valance: Vista Elégance 110
- ☐ Available with manual or electrical control system

Colours*

Anthracite grey textured
 Cream
 Pure white

RAL 9010	RAL 9001	RAL 7016
SA	Other RAL	

Silver anodized
 On request

Maximum dimensions*

	Width	Projection
Vista Elégance 95 (semi-cassette)	4500 mm	1500 mm
Vista Elégance 110 (cassette)	6000 mm	1500 mm

Certifications

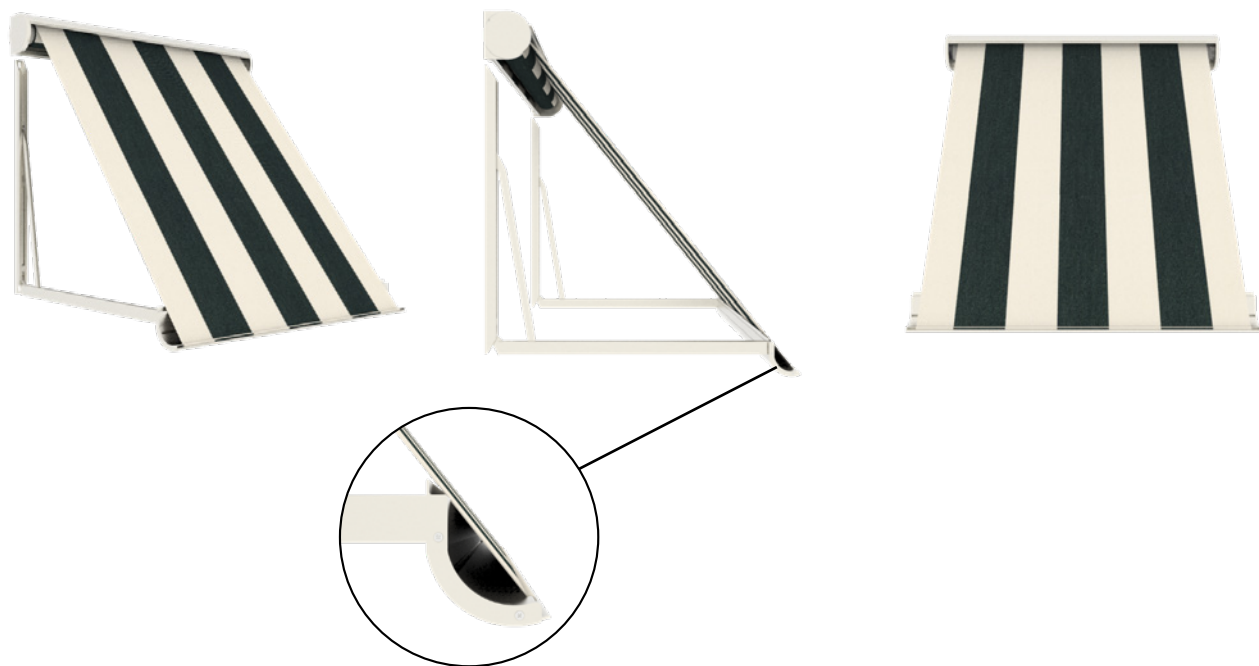
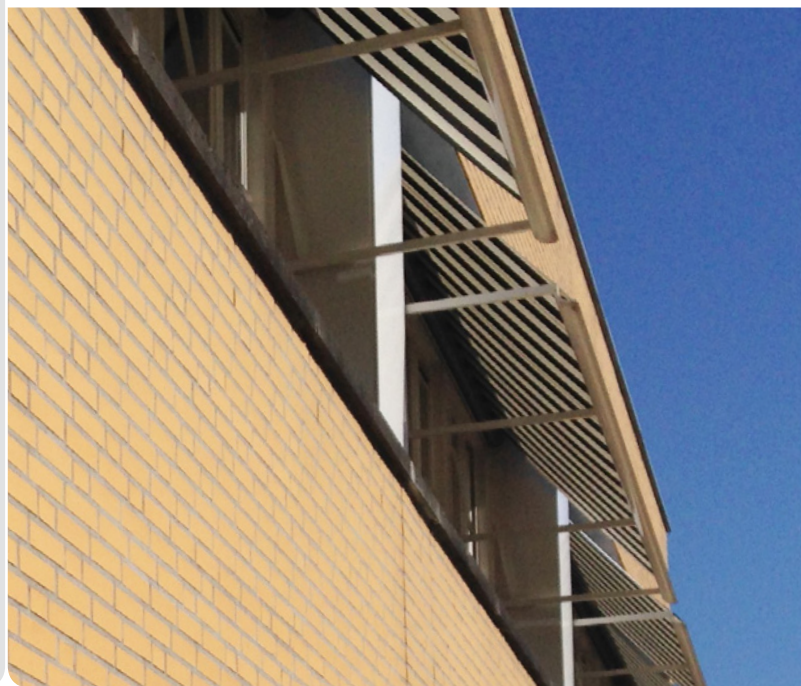


**When using special arms, the number of colours and dimensions is limited (ask your dealer about the possibilities).*



Vista Favorite[®]

Drop-arm awning








The Vista Favorite has a fully closed cassette with a unique semi-circular design. This means the fabric is fully protected against weather influences when closed, keeping it in a perfect condition for years to come. The variable extension angle means the Vista Favorite can be installed nearly everywhere.

This effective sun blind can be operated both electrically and manually. Standard available in the colours pure white, cream, anthracite grey textured and silver anodized. Every other RAL colour is available on request.



Characteristics

-  Retaining a clear view
-  Fabric fully protected in cassette
-  Unique half-round design
-  Variable projection
-  Available with manual or electrical control system

Colours*

Pure white
 Cream
 Anthracite grey textured

 RAL 9010	 RAL 9001	 RAL 7016
 SA	 Other RAL	

Silver anodized
 On request

Maximum dimensions*

	Width	Projection
Vista Favorite	6000 mm	1500 mm

Certifications

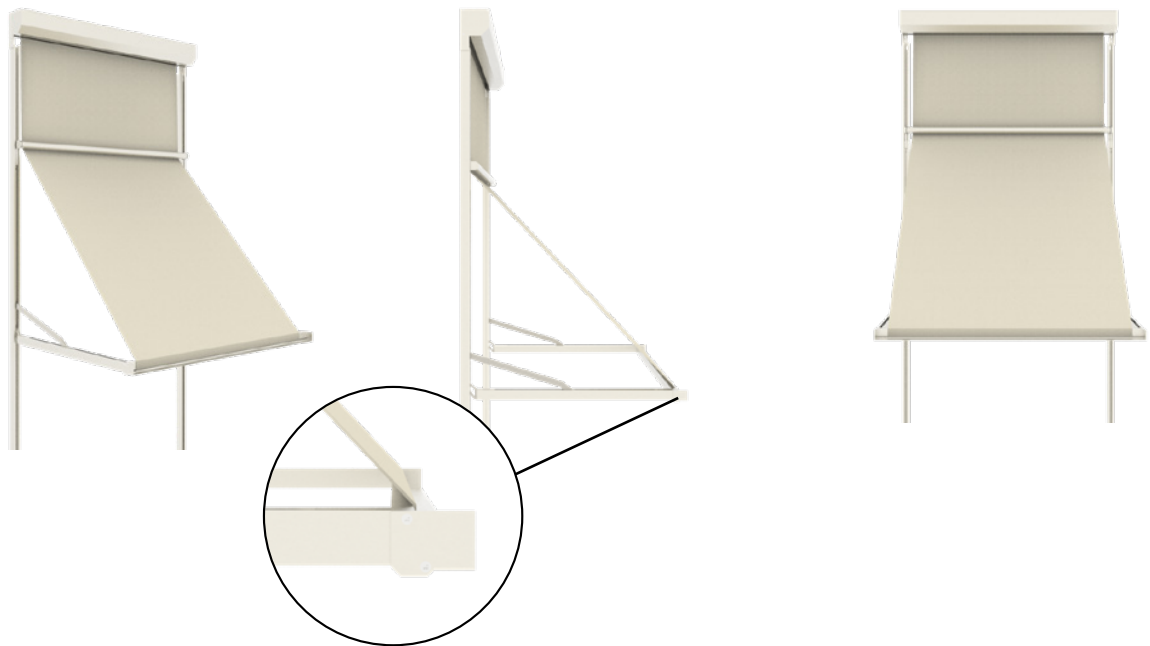
 Lifespan class 3	 Water resistance class 2	 Wind resistance class 2
--	---	--

**When using special arms, the number of colours and dimensions is limited (ask your dealer about the possibilities).*



Markisolette Compact

Markisolette



The Markisolette Compact is a combination of a screen and an drop-arm awning, which means it opens vertically first and then extends diagonally. It does not obstruct your views and keeps out the light from a low sun at the same time. Extremely suitable for high windows and easy to install inside a recess or a cove.

In addition to residential buildings, the Markisolette has also proven to be a popular external sun blind for project-based applications such as care homes, offices and hospitals. It is also used a lot at schools to keep out annoying sunlight. The awning can be linked to create even more shadow.



Characteristics

- ☐ Retaining a clear view
- ☐ Suitable for high windows
- ☐ Installable in reveal or cavity
- ☐ To link for more shadow surface
- ☐ Available with manual or electrical control system

Colours



Maximum dimensions

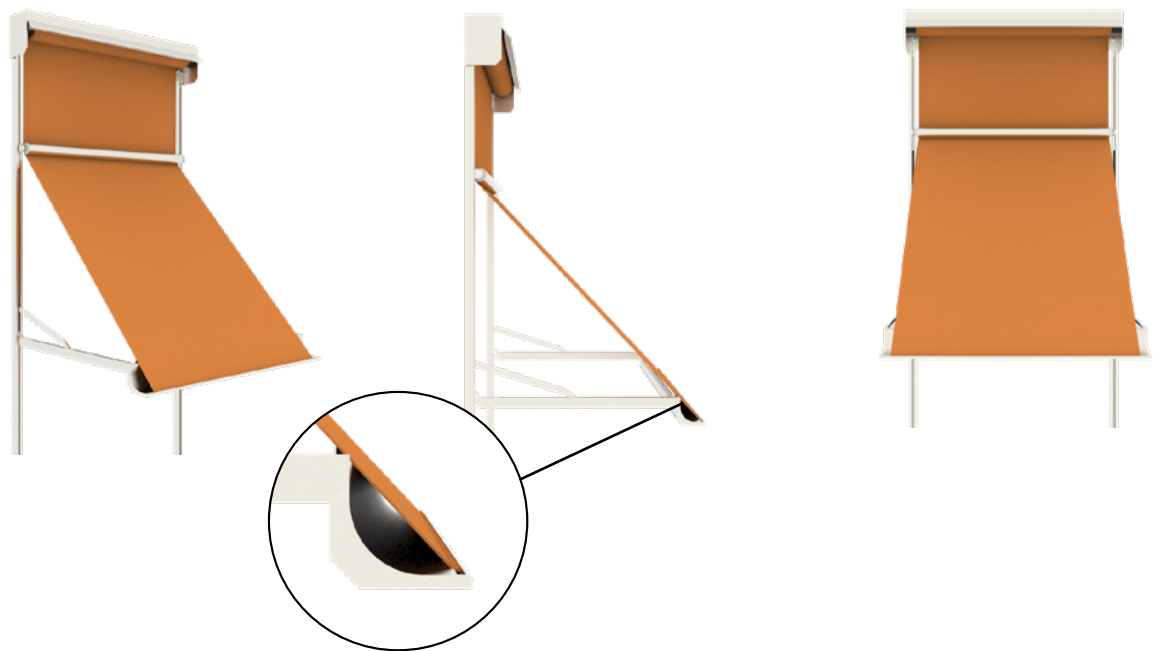
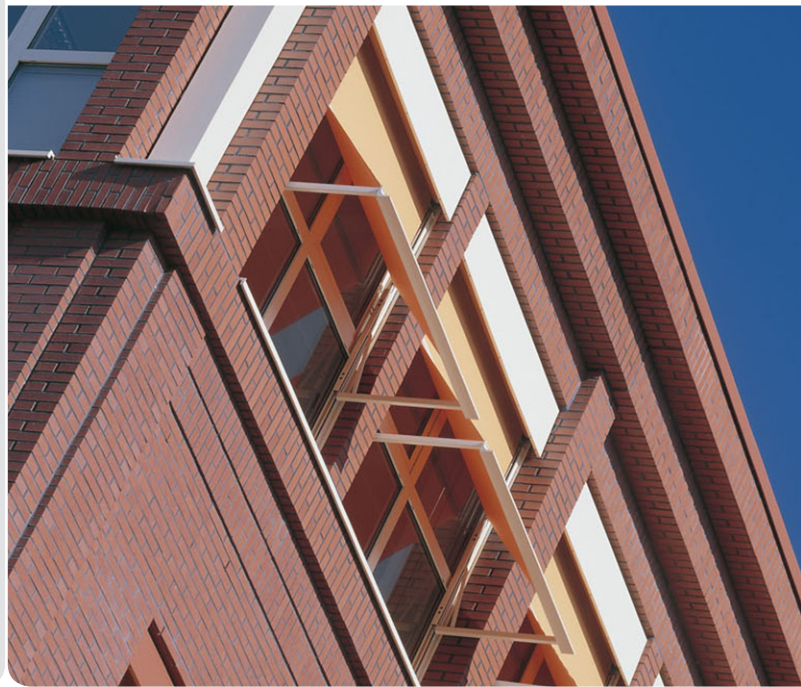
	Width	Projection
Markisolette Compact	2500 mm	800 mm

Certifications

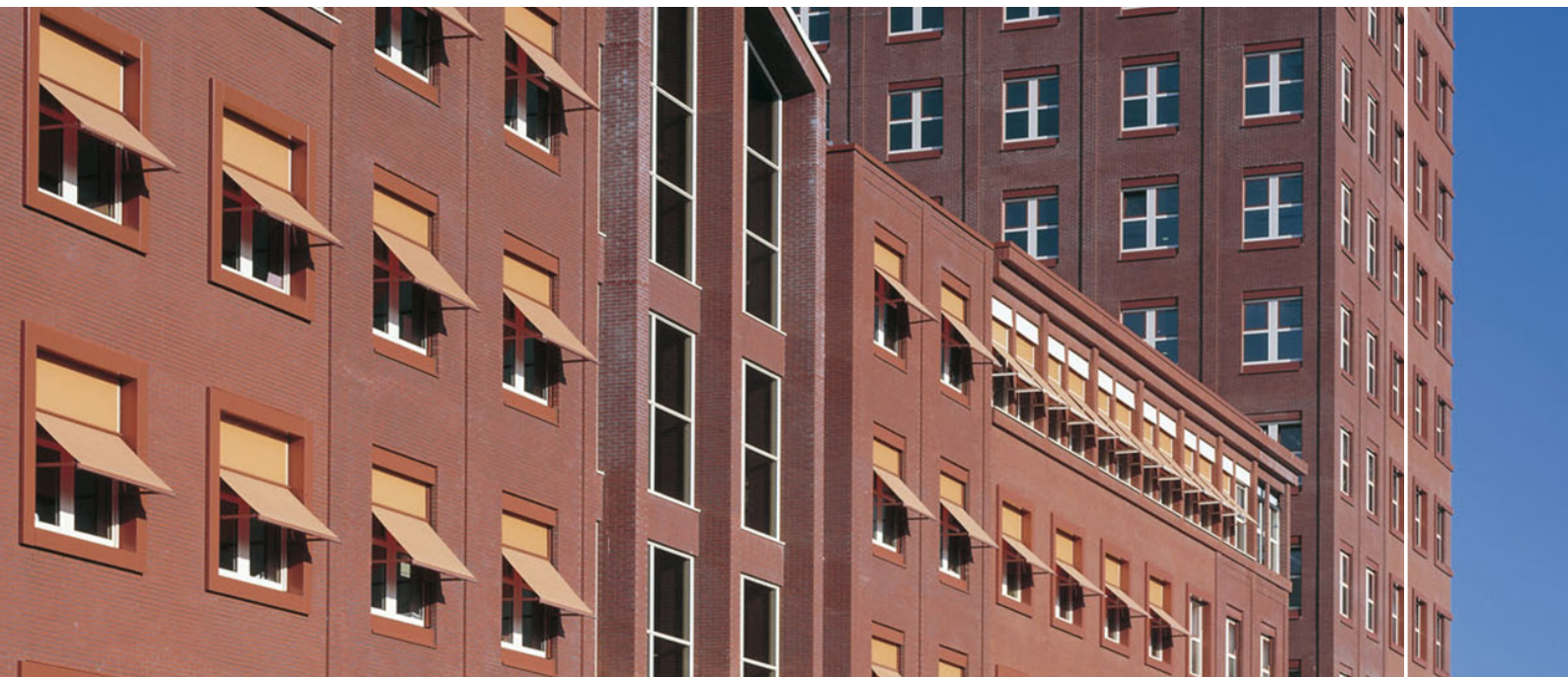


Markisolette Extra

Markisolette



The Markisolette Extra opens vertically first and then extends diagonally. It does not obstruct your views and keeps out the light from a low sun at the same time. Suitable for high windows but its four metres means it is also suitable for wide applications. Thanks to its design, the Markisolette Extra is easy to install inside a recess or a cove. Standard available in the colours cream and silver anodized. Every other RAL colour is available on request.



Characteristics

- ☐ Retaining a clear view
- ☐ Suitable for high and wide windows
- ☐ Installable in reveal or cavity
- ☐ To link for more shadow surface
- ☐ Available with manual or electrical control system

Colours



Maximum dimensions

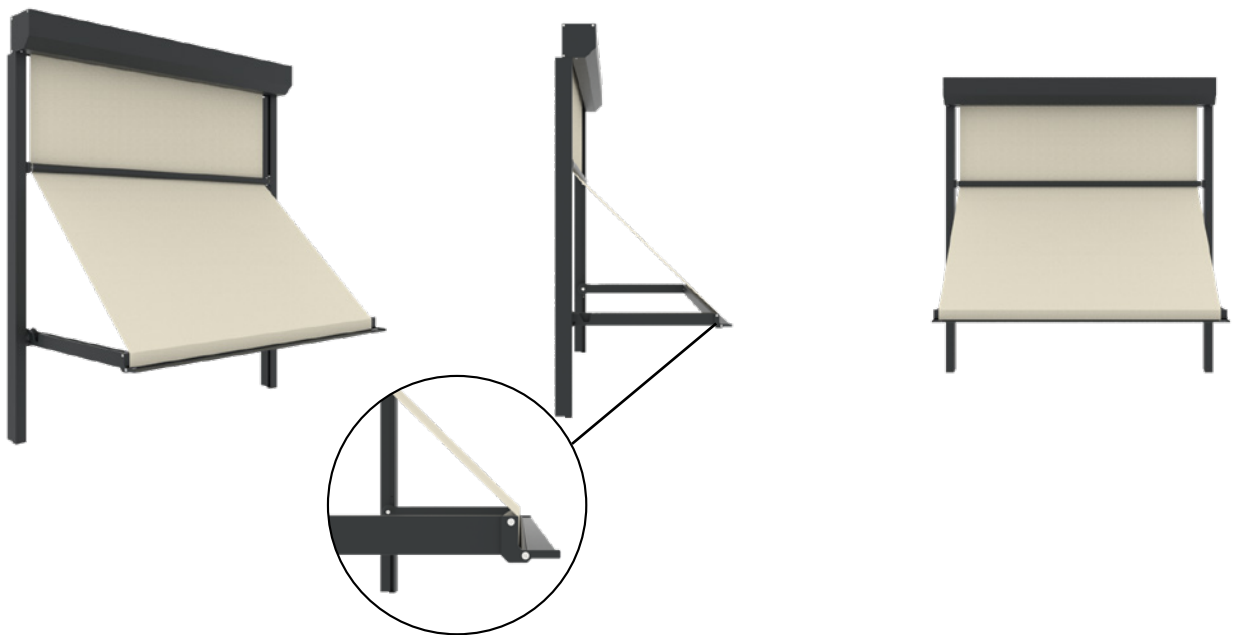
	Width	Projection
Markisolette Extra	4000 mm	800 mm

Certifications



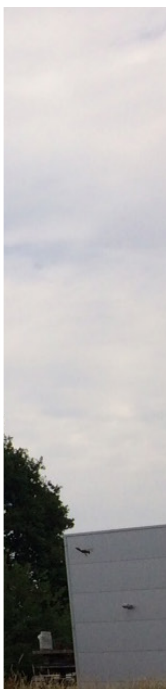
Markisolette Excellent

Markisolette



The Markisolette Excellent is a special sun blind. The first Markisolette, a hybrid between our Screen Excellent and the characteristic profiles of the Markisolette. Thanks to its economic and ergonomic design, the Markisolette Excellent extends to a maximum of half a metre. Ideal to reduce the incidence of light without obstructing your views.

A favourable price, available in various cassette sizes, beautifully designed aluminium hinges, easy to install inside a recess or a cove and linkable for larger shadow areas are just some of the benefits of the Markisolette Excellent. As such, this sun blind is ideal for project-based applications, although it would look beautiful at home too.

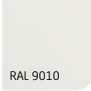






Characteristics

- ☐ Retaining a clear view
- ☐ Favourable price/quality ratio
- ☐ Installable in reveal or cavity
- ☐ To link for more shadow surface
- ☐ Available with manual or electrical control system

Colours

Pure white *Cream* *Anthracite grey textured*

		
RAL 9010	RAL 9001	RAL 7016
		
SA	Other RAL	

Silver anodized *On request*

Maximum dimensions

	Width	Projection
Markisolette Excellent	2000 mm	800 mm

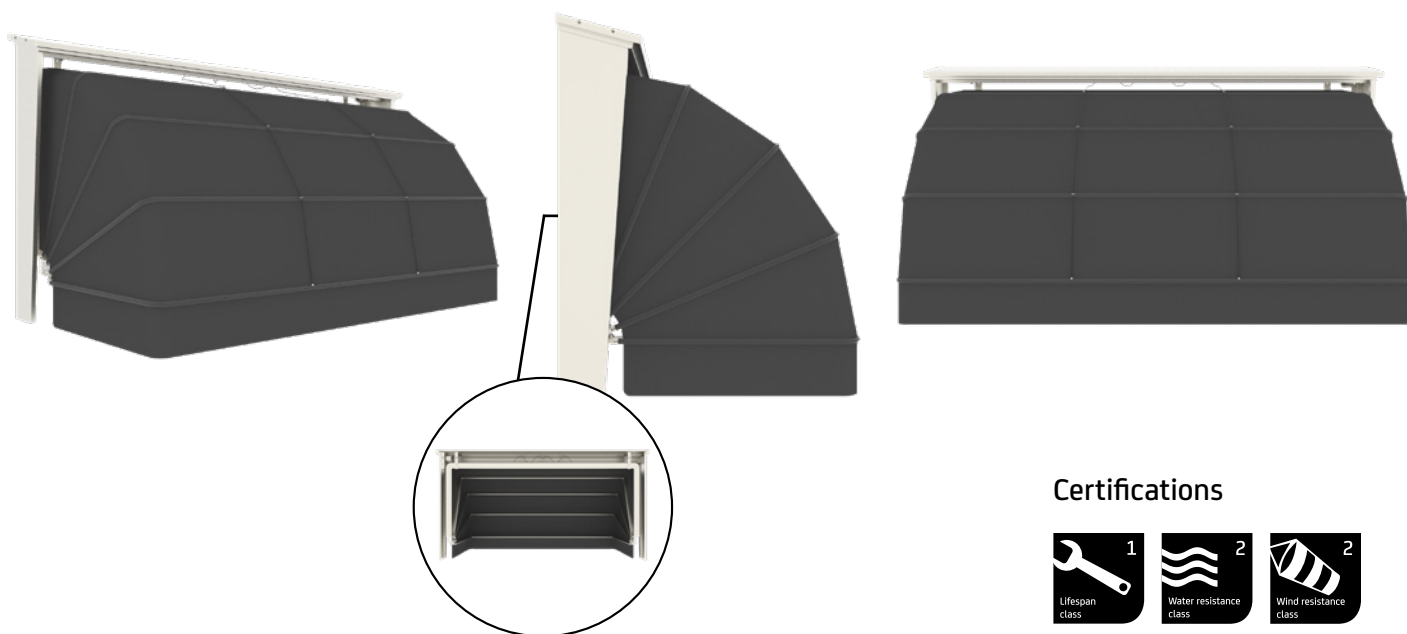
Certifications

 3 Lifespan class	 2 Water resistance class	 2 Wind resistance class
--	---	--



Dutch canopies

Canopy wood, canopy aluminium



Certifications



Dutch canopies, nostalgic and handcrafted awnings. Not entirely unjustified, because our canopies are still manufactured in a traditional way. No large machines or huge production lines, but a professional with talent, extended knowledge of the product and his tools. A distinguishing factor of the canopy is that it also blocks sunlight from the side.

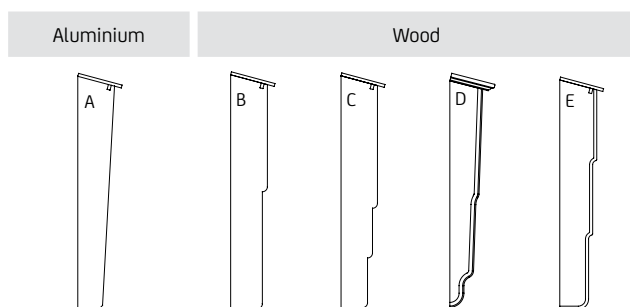
When it comes to appearance, the Dutch canopy is perhaps the most customizable product in our range. Do you like a modern aluminum canopy, or do you prefer a traditional wooden one? Perhaps even a combination of both? It's possible. You can also choose from various side panels, covers, colors, fabrics and decorative bands. Everything to put together the perfect Dutch canopy for you. If you are a bit overwhelmed by all the options, ask your dealer for a tailor-made advice.



Characteristics

- ☐ Handcrafted
- ☐ Nostalgic appearance
- ☐ Also blocks light from the side
- ☐ Available in both aluminum and wood
- ☐ Supplied with valance (straight or wavy)
- ☐ Available with manual or electric control

Side panels



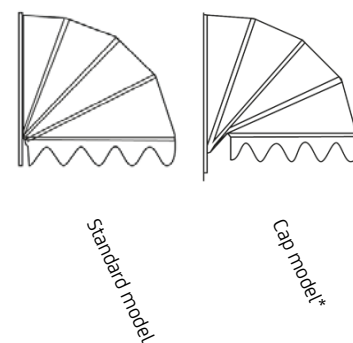
Maximum dimensions

	Width	Projection
Dutch canopies	6000 mm	1600 mm

Colours



Models



*Only possible with an aluminium canopy.



Tibelly®

Acrylic fabric



T100 White Uni



T127 Pearl tweed Uni



T121 Light grey Uni



T138 Light grey chiné Uni



T122 Grey Uni



T136 Stone tweed Uni



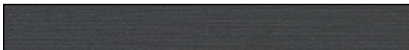
T367 Slate Uni



T139 Dark grey chiné Uni



T131 Carbon Uni



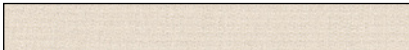
T365 Charcoal tweed Uni



T368 Black Uni



T103 Naturel Uni



T135 Parchment tweed Uni



T102 Beige Uni



T133 Sand chiné tweed Uni



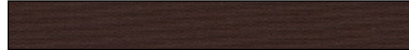
T366 Taupe Uni



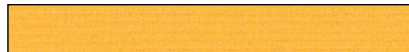
T128 Sepia tweed Uni



T134 Brown Uni



T107 Yellow Uni



T109 Ochre Uni



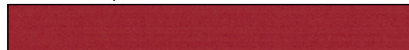
T340 Orange Uni



T112 Traffic red Uni



T113 Ruby red Uni



T114 Burgundy Uni



T119 Blue Uni



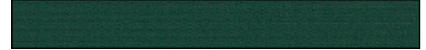
T120 Navy Uni



T132 Lime green Uni



T117 Forest green Uni



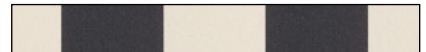
T384 Anthracite/grey Block 15 cm



T386 Grey/light grey Block 15 cm



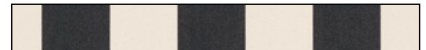
T362 Black/cream Block 15 cm



T356 Grey/cream Block 15 cm



T507 Black/cream Block 10 cm



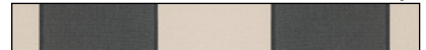
T515 Grey/cream Block 10 cm



T503 Grey/white Block 10 cm



T254 Anthracite/cream Fantasie Meerij



T212 Grey/light grey Fantasie Kempen



The fabric colours shown in this brochure can slightly differ from the reality due to the printing deviation.



T251 Grey/charcoal Fantasie Kempen



T263 Grey Fantasie Salland



T273 Grey Fantasie Veluwe



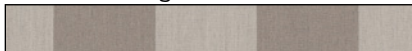
T402 Anthracite Fantasie Betuwe



T451 Grey Fantasie Marne



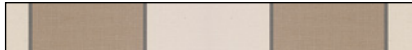
T382 Sand/beige Block 15 cm



T513 Sand/cream Block 10 cm



T256 Seige/cream Fantasie Meerij



T214 Sand/beige Fantasie Kempen



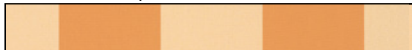
T252 Taupe/brown Fantasie Kempen



T453 Beige Fantasie Marne



T358 Ochre/yellow Block 15 cm



T521 Ochre/yellow Block 10 cm



T501 Yellow/white Block 10 cm



T264 Orange Fantasie Salland



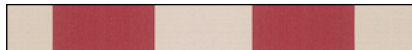
T274 Orange Fantasie Veluwe



T416 Orange Fantasie Betuwe



T156 Red/cream Block 15 cm



T509 Red/cream Block 10 cm



T511 Burgundy/cream Block 10 cm



T323 Red Fantasie Beemster



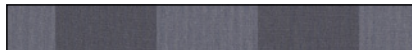
T265 Red Fantasie Salland



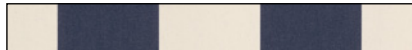
T275 Red Fantasie Veluwe



T390 Navy/blue Block 15 cm



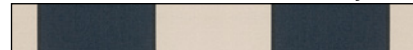
T354 Blue/cream Block 15 cm



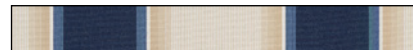
T519 Blue/cream Block 10 cm



T253 Blue/cream Fantasie Meerij



T320 Blue Fantasie Beemster



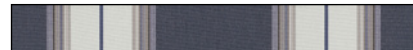
T266 Blue Fantasie Salland



T276 Blue Fantasie Veluwe



T414 Blue Fantasie Betuwe



T388 Green/light green Block 15 cm



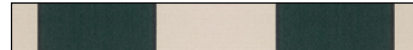
T352 Green/cream Block 15 cm



T517 Green/cream Block 10 cm



T255 Green/cream Fantasie Meerij



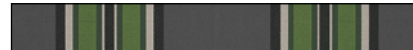
T322 Green Fantasie Beemster



T267 Green Fantasie Salland



T277 Green Fantasie Veluwe



T408 Green Fantasie Betuwe





Certifications



We set great store by the quality of our sun protection systems. All our products are compliant with the CE standards and, since the year 2000, have been subjected to extensive testing by TÜV Nord. This is carried out in accordance to multiple DIN-standards. Our sun protection systems are tested on the basis of three criteria:

- Lifespan class
- Waterload class
- Wind resistance class



Lifespan class according DIN EN 13561

Lifespan expresses the number of extension and retraction movements that an exterior sun protection system can withstand. The overview below indicates the various classes applicable in accordance with the EN 13561 standard.

Number of movements	Class 1	Class 2	Class 3
Open and closed	3.000	7.000	10.000

Waterload class according DIN EN 1933

Waterload expresses the number of water in liter/m² per hour that an exterior sun protection system can withstand. This indicates, the quantity rainfall which a fully open sun protection system with a slope of 14° (Corresponds to a slope of 25%) must be able to drain. The following list shows which water load classes there are.

Waterload class	Class 1	Class 2
Quantity rainfall	17 Liter/m ² per hour	56 Liter/m ² per hour



Wind resistance class according DIN EN 1932

Wind load is the maximum force of the wind which an opened exterior sun protection system can withstand. The overview below indicates the various wind resistance classes.

Wind resistance class	Class 0	Class 1	Class 2	Class 3
Beaufort-scale	< 4	4	5	6
V (km/h) (maximum)	< 28 km/h	28 km/h	38 km/h	49 km/h
V (m/s) (maximum)	< 7,8 m/s	7,8 m/s	10,5 m/s	13,6 m/s
Nominal test pressure (N/m ²)	< 40	40	70	110
Safety test pressure 1,2 p (N/m ²)	< 48	48	84	132

Example:

Wind resistance class 1 = Beaufort-scale class 4 = wind speed of max. 28 km/h of 7,8 m/s = pressure of 40 Newton per m².







Your sun protection system dealer:

